

NOVEMBER 1, 1999

Volume 1, Issue 2

Price \$3.00

The newsletter of the non-profit WI&MRyHPG. Organized for railroad historians, enthusiasts, and modelers interested in the Washington, Idaho & Montana Railway, from its origins in 1905 through it's ownership of today.

Inside this issue:

The Deary Enterprise, Volume 1, Issue 1 1908	1
HPG News of the Quarter Deary yard fire of 1908	2
The Horses That Built The Big Fills	3
Potlatch Lumber Co. Mallet No. 24	4
Entertainment Trans-The WI&M at Play	5
How to Reach the HPG Membership Application	6

THE WHITE PINE ROUTE QUARTERLY

The Washington, Idaho & Montana Railway History Preservation Group



Alco 4-6-0 No. 2 rests at the Deary depot. With a construction number of 40685, she was the saturated-steam sister of the more popular super-heated No. 1 (c/n 40684). No. 2 was scrapped at Potlatch in the early 1950's.— HPG Collection

The Hub of Upper Potlatch; Information concerning Deary, the coming metropolis of Latah County, and its Abundant Resources

A reprint from the Deary Enterprise newspaper, Volume 1, Number 1, September 18, 1908.

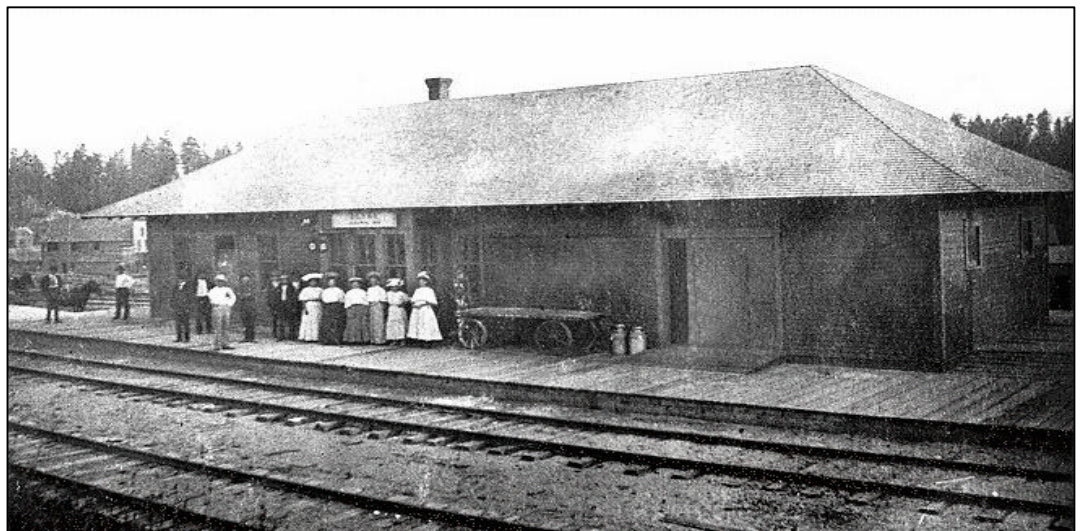
Mission Statement of the Washington, Idaho & Montana Railway History Preservation Group:

"To locate, preserve, and archive all items of a historical nature relating to the history of the WI&MRy; to issue publications on this and related subjects; to encourage public interest in the history of the WI&M and the Potlatch Lumber Company; and, to acquire objects and property appropriate for a museum and/or any of the purposes listed above."

Deary, Latah county, Idaho, is less than a year old, the first sale of town lots having taken place on the 24th day of September of last year, but it is

nevertheless a thriving town of beautiful homes and extensive and growing business interests. Deary is ideally located on

undulating ground, sloping south from the crown of the scenically beautiful Potato hill. It is on the Washington, Idaho & Montana railway,



The men of Deary stand apart from the womenfolk in this early, undated photo. Note the train signal (below left of depot sign), baggage cart and cream cans. HPG Collection